



Offshore Inland

Marine • Industrial • Oilfield

OIMO LOCATIONS

MOBILE, AL

THEODORE, AL

PENSACOLA, FL

NEW IBERIA, LA

GALVESTON, TX

DOS BOCAS, MX

MIDDLE BAY LOCATION



- Over 2,000' of deepwater, concrete dockside (Low tide depth of 36' - 38')
- 20 acres adjacent and offdock concrete laydown are with excellent lighting and security fencing
- Short and long term equipment storage
- Shore power connections 480V/1200Amp
- Full services with potable water, fire main, power and sewer
- Additional 10 acres of lay down, fabrication, and storage just off dock

- Heavy lift capabilities
- 10 acre fabrication & plating & shop with overhead crain
- 3 acre blast and paint area
- All crafts available to support short or long term mobilization, repairs, or vessel conversions
- Adjacent to Aker Flex Spool Base and Technip's Rigid Spool Base
- Approximately 5 miles from Interstate

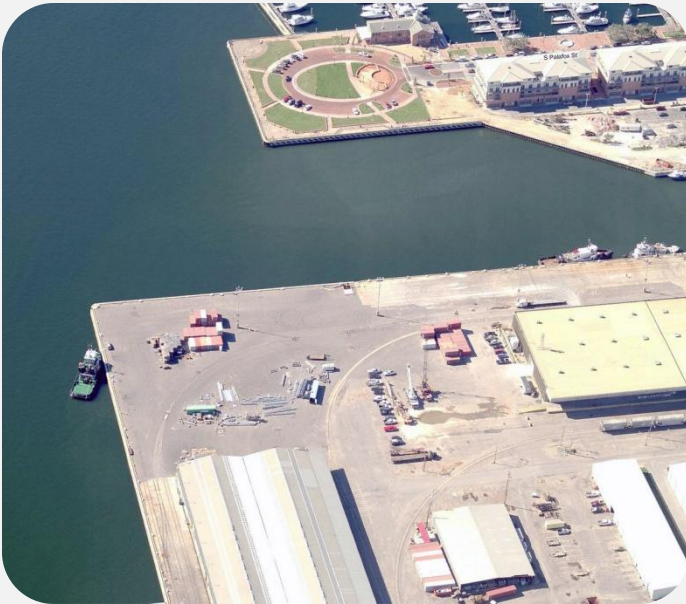


THEODORE LOCATION



- Over 1700' of deepwater, Reinforced Steel dockside (Low tide depth of 35')
- Up to 5 acres adjacent gravel lay down area with available lighting and security fencing
- Short and long term equipment storage available
- Additional 10 acres of lay down, fabrication, and storage available just off dock
- Multiple sized cranes are available, including full heavy lift capabilities
- All crafts available to support short or long term mobilizations, repairs, or vessel conversions
- Short pilotage from central gulf Mobile Sea Buoy (2-3 hours)
- Project team office trailers available at dock side
- Regularly handle large Subsea Mobilizations and Rig Projects at facility
- 10,000 to 20,000 sq ft covered storage with 30 ft. hook height available
- Short term wharfage available
- Across the channel from Aker Flex Spool Base and Technip's Rigid Spool Base
- Local harbor tugs, pilots, barges, and fueling
- Approximately 5.5 miles from Interstate
- Secure and gated facility

PENSACOLA LOCATION



- 1500' of deepwater (concrete reinforced dock space) with 32-34 feet of water
- 9 acres of paved/concrete apron area for project staging, equipment testing, dockside fabrication, and vessel loading and discharge operations
- 100,000 sq. foot of covered warehouse available for the subsea, marine, and drilling projects
- An additional 18.5 acres of warehousing and storage areas for future use and overflow projects
- Full onsite equipment handling and crane services include multiple fork trucks, fork lifts, pickers, and 150-300 ton hydraulic cranes

- Dockside services including water fire main and even full shore power scheduled for upgrade to 1200 amps
- Active, on-dock rail service
- Only 5.5 miles transit to port by way of the Pensacola Bay. The channel is 500' wide at tis seaward end
- 1 mile from Interstate (I-110) and 6 miles from sea buoy



NEW IBERIA LOCATION



- 1 acre dockside service area with 15' of water
- Full services, lift boats/barge repair area
- 13 acres of project and storage area
- 30,000 sq. feet indoor fabrication & blasting & painting
- Full service welding, piping, and mechanical services
- 2 miles from Hwy. 90

Services:

- Ultra high pressure water blasting
- Marine Specialty Coatings
- Abrasive blasting
- Crews (onshore and offshore)
- Shot & Soda blasting
- Airless Spraying
- Containment
- Non Skid Surfaces
- Pipeline & Road crews

Capabilities:

- Cranes & Oversized Equipment
- Marine Vessels
- Offshore Rigs & Platforms
- Manufacturing
- Power & Utilities
- Food Processing
- Pulp & Paper
- Pipe Lines
- Petro Chemicals



GALVESTON LOCATION



- 800' of private deepwater dock space with 42'-44' of water
- 10 fully secure acres of easy access, project area for storage, lay down, equipment testing, and equipment modification
- Over 20,000 sq ft. of covered warehousing and fabrication support.
- Additional 30 acres of additional, open project area with developed dockside facility on (barges) channel (15' deep)
- Convenient location on the west side of the major port harbor area in Galveston (approx. ¼ mile from Project Piers 39 & 40)

- Less than 2 miles from a major Interstate
- Full access to adjacent roadways, approaches, and rail trackage
- Fully managed and staffed repair and project support team with highly efficient, experience and professional labor force
- We have all necessary handling equipment, crane support for all your needs including heavy lifts at reduced rates



DOS BOCAS LOCATION



- Strategically positioned in Dos Bocas, Mexico on Deepwater
- 2 available docks (approx. 900'ft each)
- Channel and docks die water depth is 33 feet
- 10,000sqm of cement dockside project staging area
- Additional (100,000sqm) staging area available upon need to perform maintenance, lay down, and assembly activities

- Onsite turnkey services with multi crafts
- Dockside services: shore power (220V, 200amp) service. Flood lighting, generators, fire main, potable water, sewage storage, scrap and garbage roll offs should all be available upon request

