



# Offshore Inland

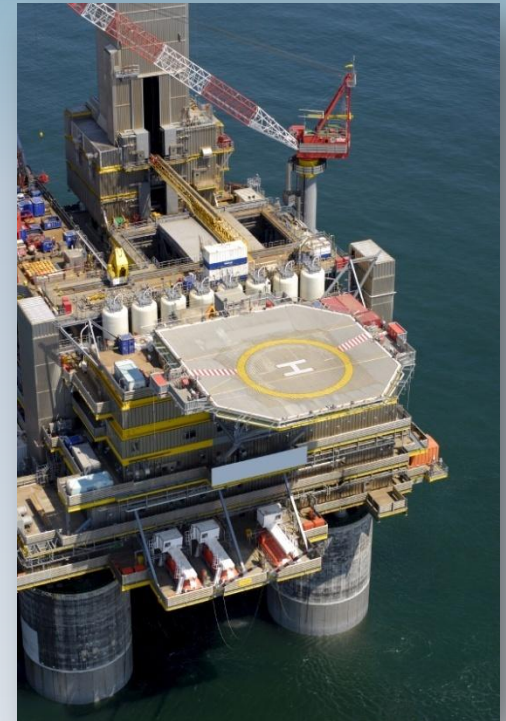
Marine • Industrial • Oilfield



## SUBSEA SUPPORT SERVICES

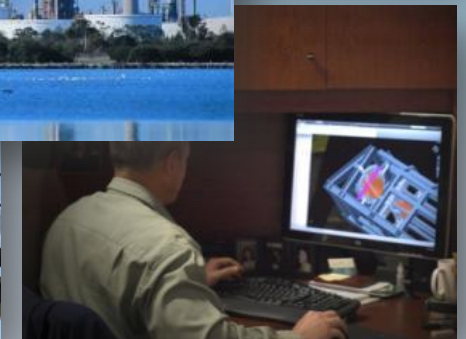
# COMPANY OVERVIEW

- Founded in 1983, Offshore Inland established itself early as a "premier source" for hydraulic remanufacturing service for plants and manufacturing. Then in the mid 1990's, with the dramatic growth of the oil & gas business, Offshore Inland expanded its resources and services to support offshore drilling, sub-sea construction, marine, and industrial projects.
- With an expanding foot print, Offshore Inland is positioned with deepwater dockside service and fabrication facilities through the U.S., Mexico, and West Africa. Globally servicing customers with skilled, multi-craft installation and repair teams for small or large projects.



# OFFSHORE INLAND SERVICES

- MARINE SERVICES
- OILFIELD SERVICES
- INDUSTRIAL SERVICES
- BLAST & PAINT SERVICES
- FABRICATION SERVICES
- DESIGN & ENGINEERING SERVICES



# LOCATIONS

Offshore Inland offers strategic locations that support our fabrication, equipment handling and storage, project mobilization, vessel repair and overhaul.

- Mobile, AL,
- Pensacola, FL
- New Iberia, LA
- Galveston, TX,
- Dos Bocas, MX
- Del Carmen, MX
- Douala, Cameroon, West Africa.



# COMPANY CAPABILITIES

- ▶ Major upgrades, reactivations, conversions & overhauls
- ▶ Certified welders and fitters (structural and piping)
- ▶ Structural piping & mechanical design, fabrication, and installations
- ▶ High pressure piping systems renewal, fabrication, and installation
- ▶ Mechanical, hydraulic, and electrical support and repair services
- ▶ Marine joiner and flooring support and repair services
- ▶ Emergency repairs offsite, plant, topside, and offshore
- ▶ Full project support mobilization and demobilizations
- ▶ Blasting and painting services
- ▶ Mobile shipyard with global projects (Shipyard on Wheels!)
- ▶ Multiple dock side facilities for small or large projects.
- ▶ ISO 9000 compliant



# MARINE & OILFIELD EXPERIENCE

## OSV / Dive Support / Offshore Construction Vessels

- On going large project support with welders and fitters
- Emergency dockside and offshore repair support
- Crane and equipment change out
- A-frame design, fabrication, and installation
- Mezzanine deck design, fabrication, and installation
- 4 point mooring systems
- Ballast and sounding pipe renewal
- Tank and pipe cleaning and steel renewal
- Thruster tubing flushing, renewal, repair, and support

## Sub-sea

- Umbilical hose reel fabrication and installation
- Pennant reel fabrication and installation
- J- Lay fabrication and installation
- Vessel tie-in units design, fabrication and installation
- Deepwater mud mat fabrication and installation
- Mobilization and demobilization dock side support



# MARINE & OILFIELD EXPERIENCE



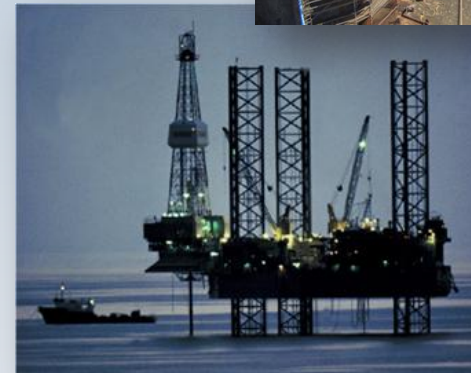
## Semi-Submersibles

- Emergency dockside and offshore repair support
- On going large project support with welders and fitters
- Upgrades, reactivations, and modifications
- Column, ballast tanks, and pump room steel renewals and repairs
- Water tight door repair, fabrication, and installation
- Ballast and sounding pipe renewal
- Ballast control system renewals
- Tank and pipe cleaning, blast, and paint
- Thruster control tubing flushing, renewal, repair, and support



## Jack Up Rigs

- Emergency dockside and offshore repair support
- On going large project support with welders and fitters
- Upgrades, reactivations, and modifications
- Jack up leg extensions and repairs
- Hydraulic jacking system overhaul
- Pontoon and mat steel work
- Rig crane change out and repairs
- Accommodations extensions and joiner renewal



# INDUSTRIAL SERVICES

Offshore Inland is able to provide Structural/Steel/Piping (Fabrication and Erection), Mechanical, Piping, Module Fabrication, Electrical, Hydraulic, Instrumentation, Blasting, Painting, Rigging and Heavy lift Services, and Scaffolding. Clients benefit from 25 years of experience in the industrial and commercial industries.

## CAPABILITIES

- Plant Maintenance
- Process Pipe Fabrication, Installation, & Commissioning
- Structural Steel Fabrication, installation, & testing
- Millwrights, foundation installation, & equipment alignment
- Mechanical, electrical, hydraulic, & controls repair & installation
- Modular Fabrication, heavy lift, transportation, installation
- Civil Erection and mechanical integration
- Shutdowns (Planning & Execution)
- Specialty Welding Services (ABS, DNV, API, Stainless, etc)
- Fabrication with Deepwater Dockside Access
- Equipment Fabrication/Erection
- Heavy Hauling & Rigging Services
- Metal Building Construction
- Architectural siding installation
- Underground Piping
- Plant demobilization and relocation Services



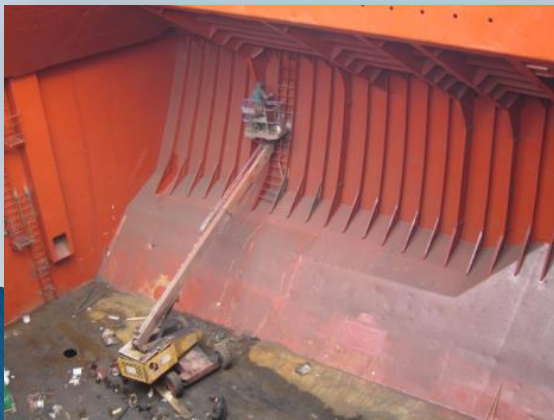
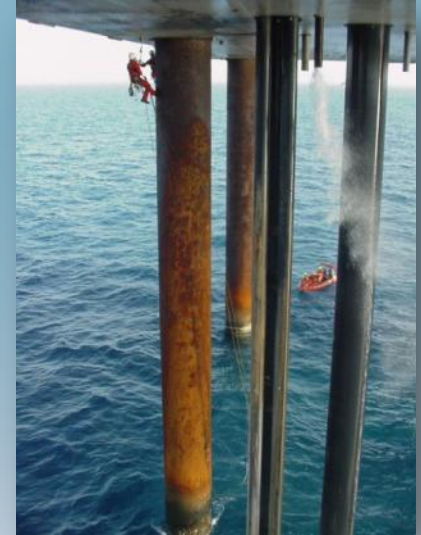
## SERVICES

- Fabrication
- Installation
- Maintenance
- Project Management
- Engineering and Design
- Upgrades
- Shutdowns and outages
- Component machining
- Flushing
- Blast and Painting

# BLAST & PAINT SERVICES

## SERVICES

- Ultra high pressure water blasting
- Abrasive blasting
- Shot & Soda blasting
- Marine Specialty Coatings
- Airless Spraying
- Containment
- Non Skid Surfaces
- Crews (onshore and offshore)
- Pipeline & Road crews
- Hydrocat Water Blasting
- Paint Surveying with 3D Laser Scanning



## CAPABILITIES

- Cranes & Oversized Equipment
- Marine Vessels
- Offshore Rigs & Platforms
- Manufacturing
- Power & Utilities
- Food Processing
- Pulp & Paper
- Pipe Lines
- Petro Chemicals

# FABRICATION SERVICES

Offshore Inland has provided technical support, design, and fabrication for most of the major marine, drilling, subsea, and seismic companies for the past ten years. We have built hundreds of simple to complex systems each year.

- Jumpers
- Accommodations
- Handrails
- Foundations
- Skids
- Spreader bars
- Plets, Sleds, and Plems
- Turn down sheaves
- Large and small reels
- Cable drums
- Chutes, grillage
- All type frames
- Platforms
- Crane Pedestals
- Boom rests
- Ladder ways and catwalks
- ROV handling systems
- Grillage
- Suction Piles
- Railing and track systems
- Tanks
- Baskets
- Hoists
- Mud Mats
- Crane Cabs
- Saturation Dive Systems
- Fairleads and bolsters
- Cable ways and troughs
- A Frames and LARS
- Spool Tensioners (VTUs)
- BOP handling systems
- Life boat platforms
- Under deck structures
- Crown sheaves



# DESIGN & ENGINEERING SERVICES

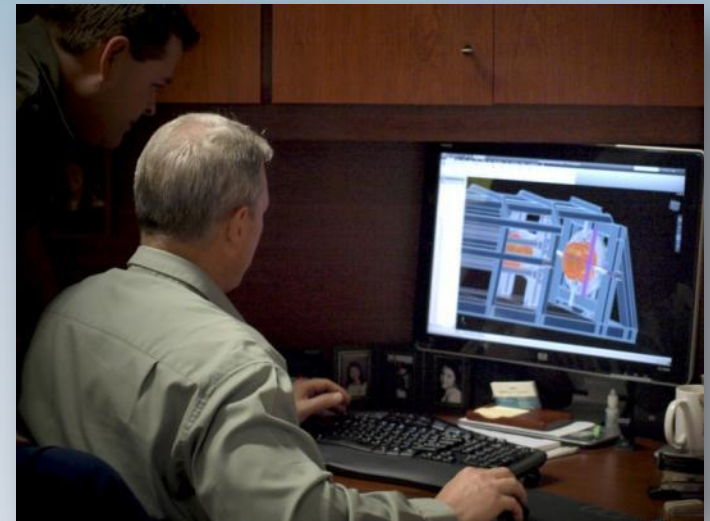


Offshore Inland Marine & Oilfield's engineering team is dedicated to providing our customers with superior technical support

The engineering resources found in house and through our closely held engineering support group allow for true, full-scope engineering, procurement, and service (EPS) support for our customers. Offshore Inland Marine & Oilfield offers a virtual one-stop-shop. Our services offer conceptual design, load and reaction analysis, finite element design, ship constructor design with deck reaction and light ship verification, autocad structural drawings, and computer aided cutting and layout.

We have the following compliment of engineering staff:

- Professional Certified Fluid Power Principal Engineer
- Autocad and Ship Constructor Operators / Draftsmen
  - Senior Mechanical Engineers
- Naval Architects / Marine Engineers
- Senior Marine Systems Engineer
  - Field Engineers



# RECENT SUBSEA PROJECTS

Fab Reel  
Sea Fastenings / Additional Assistance  
Ticonderoga load-out fabrications  
Load test and NDT seven mud mats  
Fab and loadout mud mats  
Mud mat testing  
HORIZON-Top Drive Installation Survey  
Top Drive installation  
Quad plates fabrication  
UTA Frame  
Mach. On Carousel and Anchor Chain Mods  
BOA SUB C – Provide OIS Welders  
Fabricate Transit Chute and Hang Off Frame



Load test mud mat  
Fab 26x26 SDU mudmat  
Sea fastening / Frame Fabrications  
Umbilical repair items quote  
Fab. Lead Screws  
Machine VLS Test Pads  
Blast and Paint Shackles  
Shackle stands fab  
Fab Pin Puller / Shop works  
Carousel work  
Modify Shackle Stands  
Fab Pin Puller / Shop works  
AKER – Fabricate Hang Off Frame  
Winch Plates, Roller Frame, Guard Brackets, Elevator Comp  
BOA SUBSEA – Side Extensions, wildcat installations  
Thunderhawk seafastening, fab and install  
Painting pile stub  
Cut Cover Plates for Power Blocks  
Fab. Plate Padeyes  
Cut RDS seafastening  
Fab and install reel partition  
BOA DEEP C – Install T-Sections, Deck Boards  
Supply Atlantis Seafastening



# FEATURED PROJECT

VTU's is a hydraulically operated, skid mounted unit designed to provide a maximum of 300 tons of linear force at a maximum system pressure of 3000 PSI. Thus, 2 pipe sections can be mechanically pulled together for the purpose of welding a joint. The main hydraulic rams provide the pulling force and can also be operated independently for pipe alignment purposes. Final positioning of the pipes for the close alignment tolerances required is accomplished via eight positioning cylinders, 4 each per pipe section.



# SUBSEA PROJECT SUPPORT

Some Subsea Fields OIMO have provided fabrication and labor support for:

- BHP Shenzi
- Tigerfish
- Entrada
- Dorado
- Geauxpher
- Thunderhorse
- Perdido
- King South
- Daniel Boone
- Matterhorn
- Mirage
- Cascade Chinook
- Thunderhawk
- Anadarko
- Jubilee

# OUR SAFETY POLICY

## Our Safety Commitment

Offshore Inland Marine & Oilfield Services Inc. will operate all aspects of its businesses in a manner that protects the safety and health of its employees, contractors, customers and the general public. We will foster a safety culture in which everyone believes and demonstrates that accidents, injuries and illnesses are preventable and all employees understand their responsibility for maintaining a safe and healthful workplace. Further, each employee recognizes and accepts his/her right and obligation to question stop and correct any unsafe conditions or behaviors.

### These goals are best achieved by:

- ▶ Education of employees on safe work practices
- ▶ Proactive hazard identification, elimination and control
- ▶ Continual HSE improvement processes
- ▶ Promotion of a positive “Safety Culture” lifestyle
- ▶ Complying with all applicable health and safety laws and regulations
- ▶ Integrating safety risk analysis into planning, engineering, and operating decisions

